



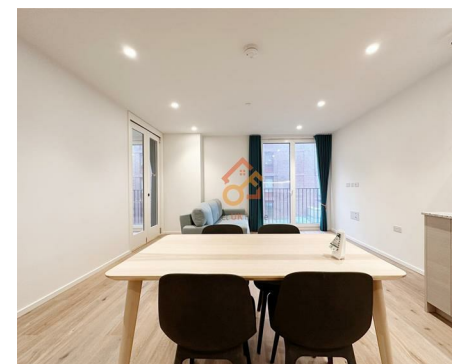
Let **UK** Home

1 Bedrooms

Flat

Located in London

£2,100 Per Month



info@letukhome.co.uk

<https://www.letukhome.co.uk/>

01795 358 886



1 Hawser Lane London

E14 0XZ



Let UK Home are excited to offer this modern one bedroom apartment in Curlew House, part of Poplar Riverside development.

The flat comprises a spacious open kitchen with a stylishly attached dining area, a magnificent living room, one bright bedroom and one modern bathroom. A virtual viewing is provided.

Residents of the flat will enjoy a range of amenities including a concierge service, a residents' lounge, a fully equipped gym, co-working space, cinema, swimming pool, sauna, steam room, etc..

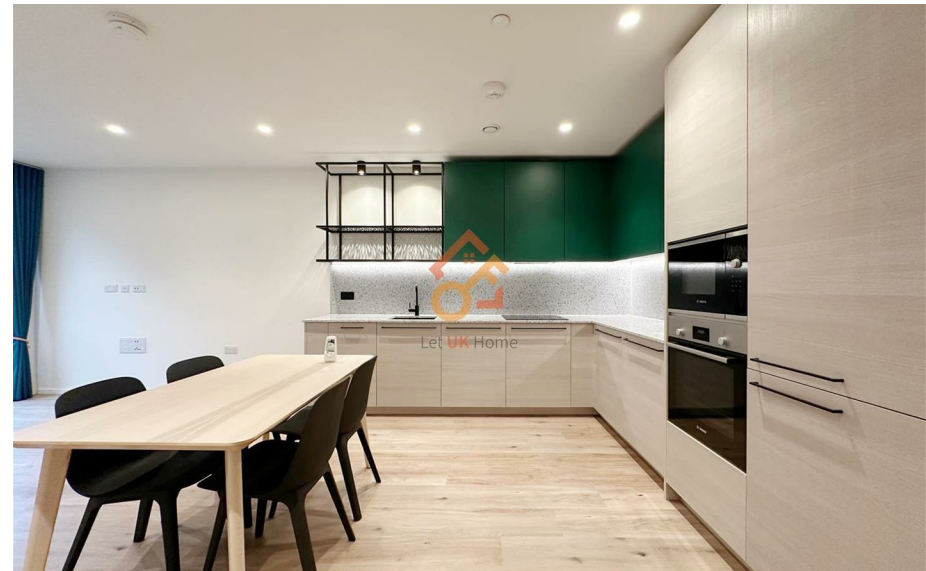
The development is conveniently located just a short walk from local shops, restaurants, and transport links, making it the perfect choice for professionals and families alike. Residents of Poplar Riverside can easily reach the bustling commercial district of Canary Wharf by short distance, and Westfield City, a famous shopping center in East London, by bicycle. They also enjoy convenient access to Bond Street, a high-street shopping street, and Heathrow International Airport.

1 Hawser Lane London

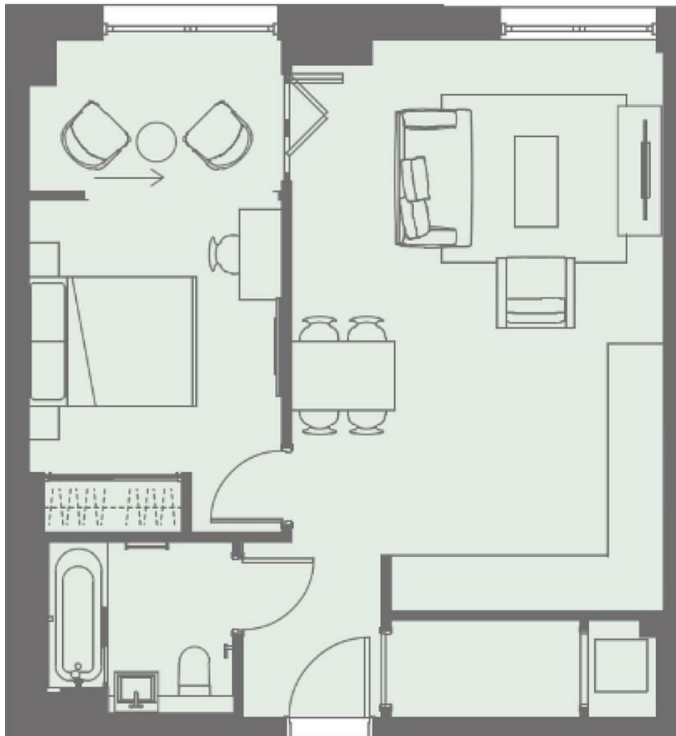
£2,100 Per Month



- 5th Floor
- 24h Security
- The Gym
- Sauna & Steam Room
- Co-working Space
- Concierge Service
- Swimming Pool
- Cinema & Game Room
- Virtual Viewing Available
- Residents Lounge



NO. BEDROOMS	Total SQ M	Total SQ FT
1 bedroom	51.9 sq m	558.6 sq ft



Let **UK** Home

3F 2 Eastbourne Terrace
Paddington
London
W2 6LG

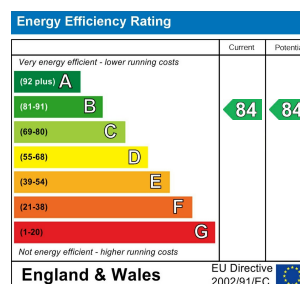
01795 358 886

info@letukhome.co.uk

Council Tax Band: D

Local Authority:

Agents Note: Whilst every care has been taken to prepare these particulars, they are for guidance purposes only. All measurements are approximate and are for general guidance purposes only and whilst every care has been taken to ensure their accuracy, they should not be relied upon and potential buyers/tenants are advised to recheck the measurements.



<https://www.letukhome.co.uk/>